

colors family

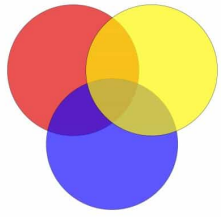
COLOR...

Color is an artistic element that when light hits an object it is reflected to the eye and light is produced

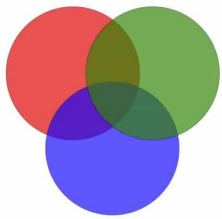
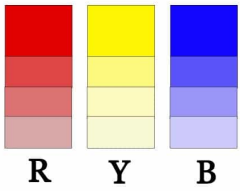


MENTALY...

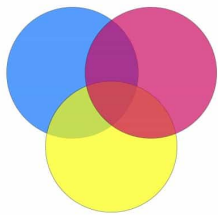
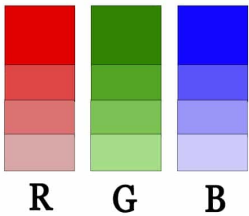
Mentally, color is an emotion. It is a human reaction to color that is partly caused by the optic nerve and partly through education and exposure to color and perhaps mostly through human senses.



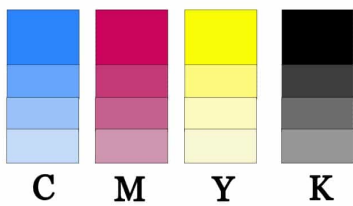
RYB
for painting/artist/design



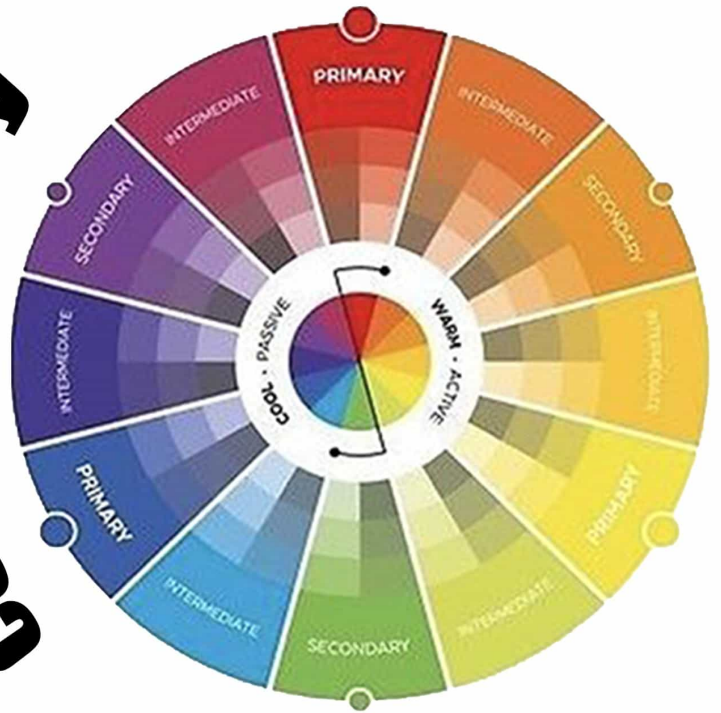
RGB
for screen/web design



CMYK
for print/inks/dyes



Color theory



TETRADIC

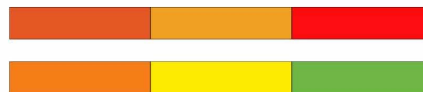
Four equally spaced colors in a square or rectangle shape on the color wheel



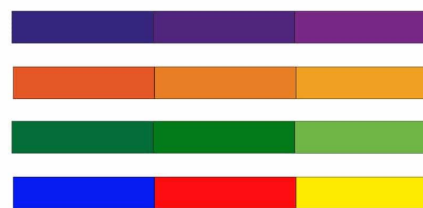
COOL COLOR



WARM COLOR



CHROMATIC



ANALOGOUS

color that are next to each other on the color wheel



COMPLEMENTERY

colors that are opposite each other on the color wheel



TRAIIDIC

three colors spaced equally apart on the color wheel



ACHROMATIC



primary color family



red
blue
yellow



ORANGE FAMILY

color psychology

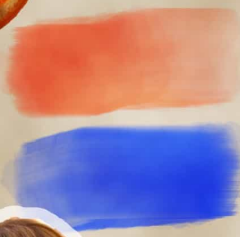
Lore Maturity
youth, freshness, joy
ecstasy, cheerfulness

ORANGE+YELLOW

Analogous



pastel color



COMPLEMENTARY

8 4 4



purple family

pastel color

color psychology

*Mysterious, inspiring
with darkness and ambiguity
against the brightness of light*

blue+red



3 3 3 9

COMPLEMENTARY





color psychology

The color of spring and the growth of nature, lively and cheerful, transferring the vitality of nature to the human body, the color of hope, new life, spiritual knowledge and faith.

GREEN FAMILY



COMPLEMENTARY

6 6



Analogous



pastel color



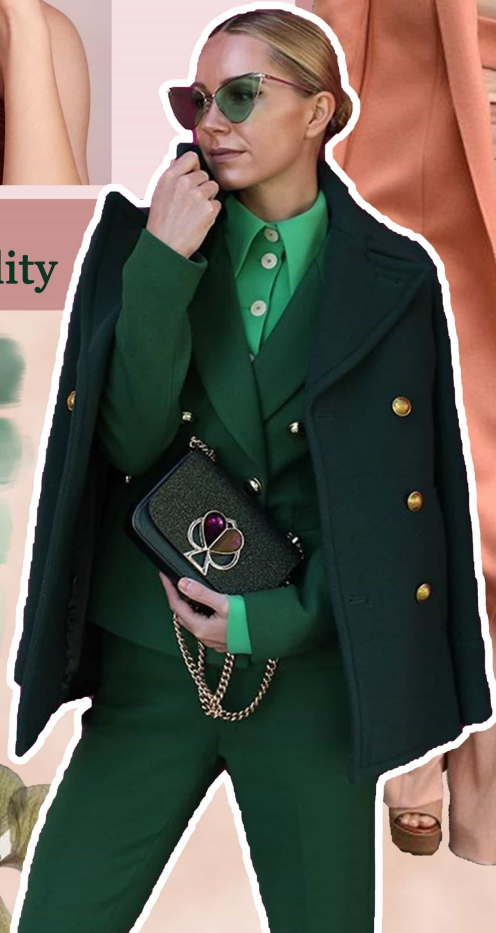
SPRING FAMILY

pink tonality



green tonality

pastel analogous



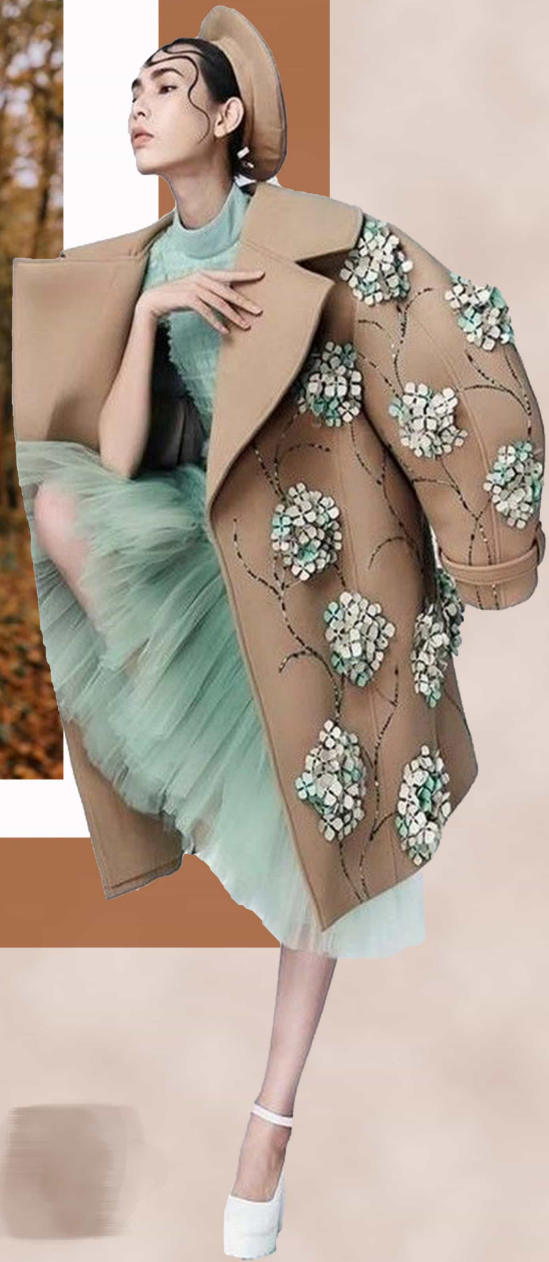
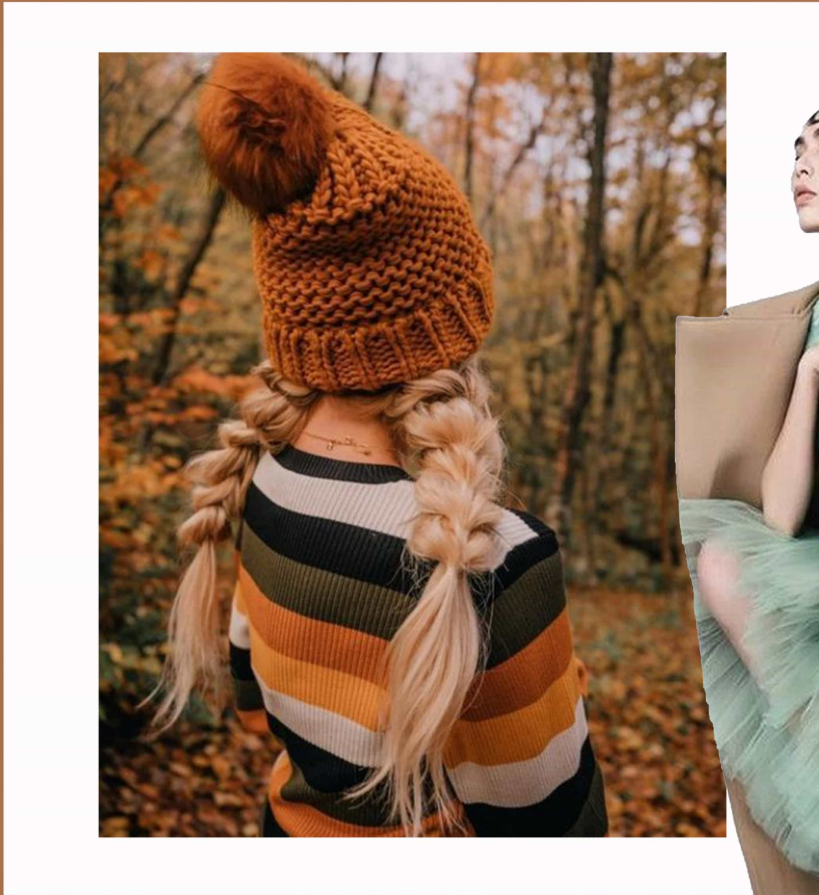
SUMMER FAMILY



PINK TONALLITY



FALL FAMILY



BROWN TONALLITY





winter family

blue tonality



nude color family



nude tonallity

colorful family

